

Your new, intuitive welding tool





Why Cobots?

We believe conventional industrial robots have been, and always will be, a crucial part of fabrication.

However, they require dedicated cells, **and are** hard and expensive to re-program, **making them challenging** to address high-mix, low-volume fabrication.

That's where cobots come in.

About Us

We are a robotics company based in Korea, who believe the future of welding and metalworking is Cobots.

With **a focus on software and hardware** for cobot applications, we help partners build successful cobot businesses.

We offer **welding & metalworking software and hardware systems** to our partners around the globe, who then build tailored solutions for their customers.

Our work revolves around providing **faster, easier, cost-effective automation for shops with an ever-growing need for skilled labor, and higher quality.**

1

**Korea's top selling
cobot welding system**

**Distinct cobot
systems**

3

7

**Global
distributors**



20

**Years of experience
in robotic welding**

30

**Seconds to teach
a 30cm fillet weld**

35

**Minutes average
first-time-training
duration**

Our Partnership With Rainbow Robotics

RBW is a proud technical partner of Rainbow Robotics, inventors of the award-winning HUBO humanoid robot, partially-owned by Samsung Electronics.

Rainbow's experience in humanoid robots gives them extensive know-how and experience on complex robotic components, ensuring lasting quality and a cutting-edge technology.

Samsung Electronics' investment in the company in 2023 is a guarantee of more improvements and innovations to come.










Our Products:

RB-MIG

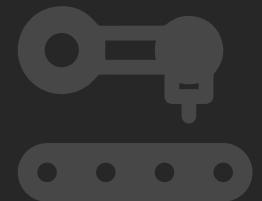
Our MIG welding system with hardware and software for fabricators in need of an easy-to-use, automated MIG welding solution. RB-MIG is the market leader in Korea, boasting one of the fastest teaching times among equivalent systems globally.

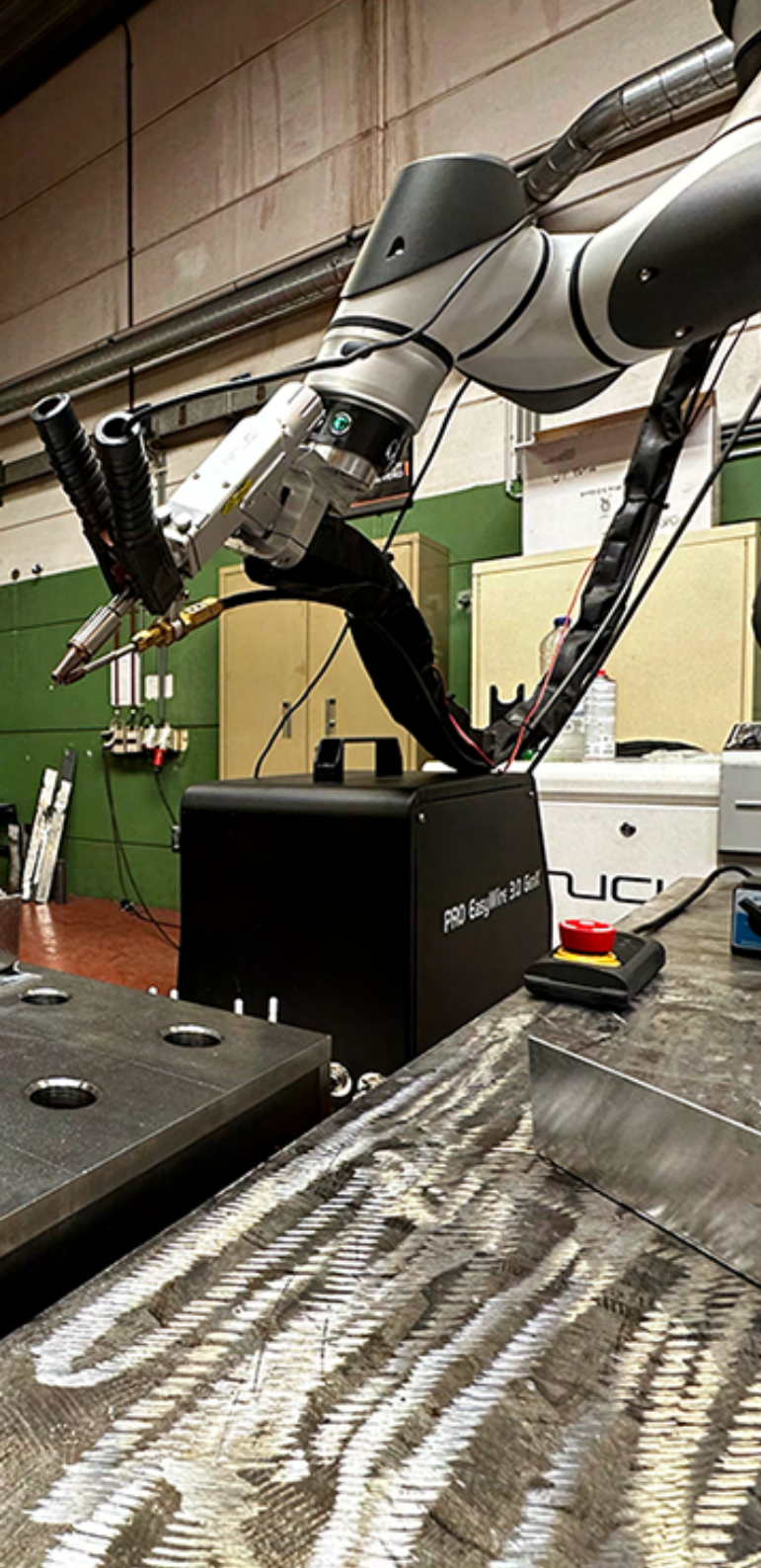
Standard features include:

-  RB-RING (Teaching flange)
-  Weaving
-  Touch sensing
-  Offset
-  Program scheduler

Industries:

- General fabrication shops
- Steel/aluminum structure manufacturers
- Pipe spool/skid manufacturers
- Industrial machinery manufacturers
- Ship machinery and parts manufacturers
- Hardfacing shops
- Heavy machinery parts manufacturers
- Material handling equipment manufacturers
- Grating / fencing manufacturers
- HVAC systems manufacturers
- Automotive parts manufacturers
- Defence industry fabricators
- Furniture fabricators









Our Products:

RB-LASER

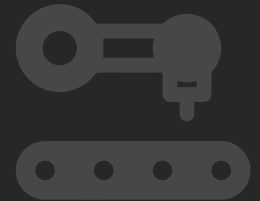
Our fiber laser welding solution for sheet metal applications with up to 4x faster weld speeds than conventional TIG welding.

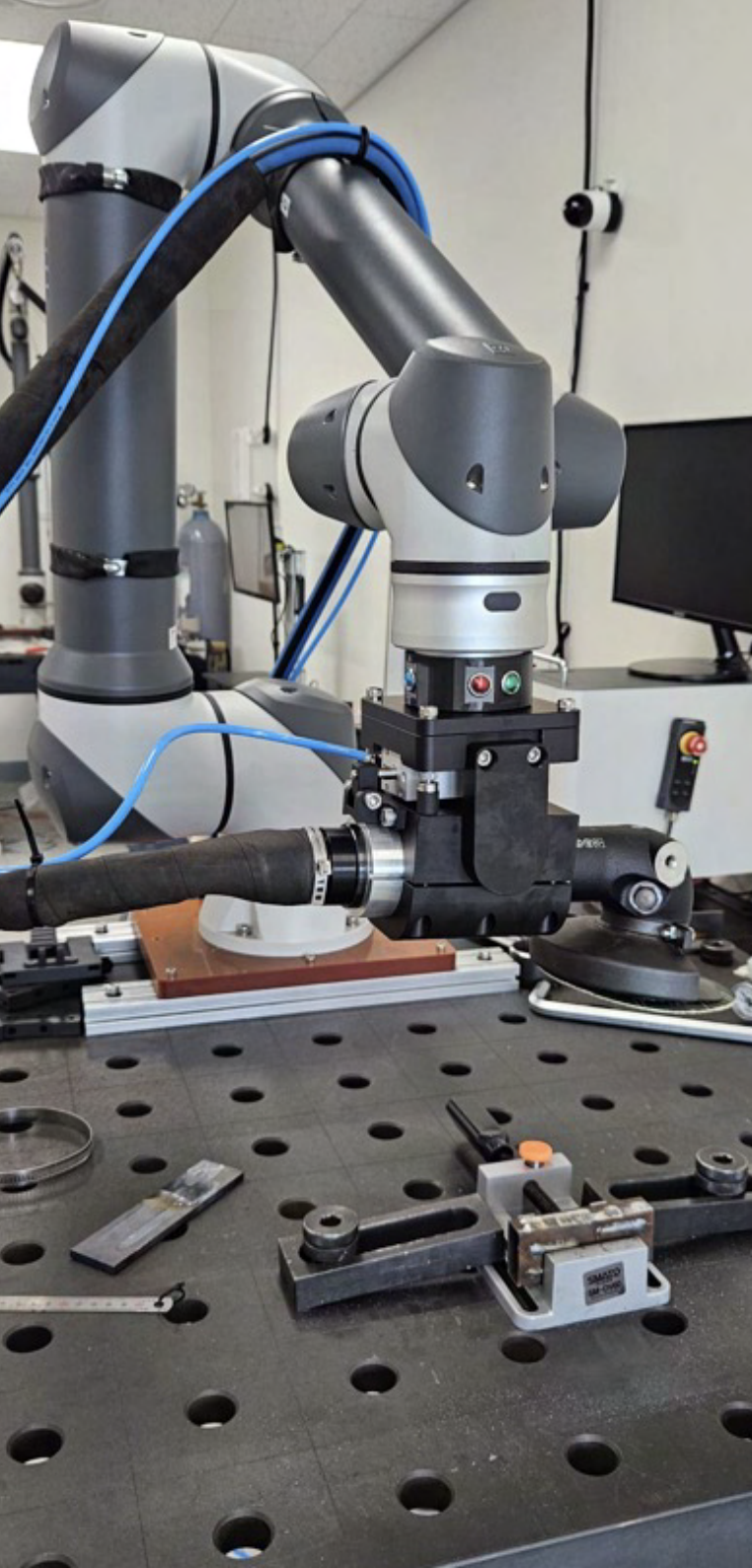
Standard features include:

-  RB-RING (Teaching flange)
-  Weaving
-  Offset
-  Program scheduler

Industries:

- General fabrication shops
- Architectural metal structure manufacturers
- Electrical box manufacturers
- Industrial kitchen equipment manufacturers
- Industrial machinery manufacturers
- HVAC systems manufacturers
- Automotive parts manufacturers
- Furniture fabricators
- Electronics: Battery casing fabricators
- Cleaning in a variety of industries









Our Products:

RB-GRIND

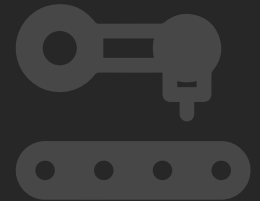
Our grinding and deburring solution for shops looking for a low-cost, high-speed, and easy-to-teach system.

Standard features include:

-  RB-RING (Teaching flange)
-  Weaving
-  Offset
-  Program scheduler

Industries:

- General fabrication shops
- Steel/aluminum structure manufacturers
- Pipe spool/skid manufacturers
- Industrial machinery manufacturers
- Ship machinery and parts manufacturers
- Heavy machinery parts manufacturers
- Material handling equipment manufacturers
- Grating / fencing manufacturers
- HVAC systems manufacturers
- Defence industry fabricators
- Furniture fabricators
- Foundries
- Aerospace parts manufacturers





Ease of Use

User-friendly welding software
+ RB-RING rapid teaching
flange for a very fast, simple
teaching and welding
experience compared to
conventional cobot systems.



Quality of life features

such as weaving,
touch-sensing, offset (copy &
paste), program scheduler
**provided default, free of
charge**



Complete wireless control

With a Windows
tablet



No restriction

in welding
machine brand



**RB's expertise in
award-winning humanoid
robots** = expert joint
architecture



**In-house or
Korea sourced parts**
=
price competitive system

Products - Applications

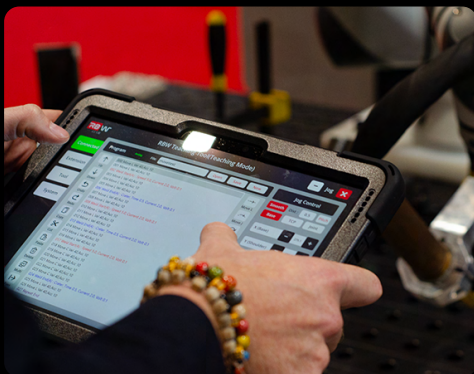
Target end-users for all
RBW systems:

High-mix, low-volume fabricators

Cobot systems shine when the
end-user fabricates a large mix
of parts in low volumes thanks
to their ease in programming.



Features



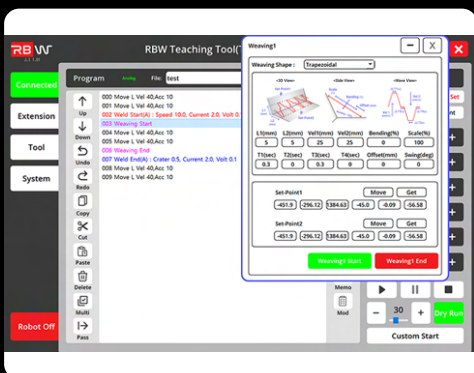
Windows-based, Wireless Control Pendant

The RBW software runs on the Windows operating system. Users are free to choose any Windows system they like, from tablets to panel PC'S.



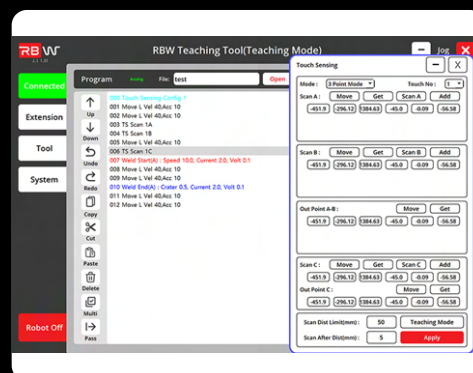
RB-RING

The RB-RING is an essential part of the RBW system; enabling an intuitive robot teaching experience, reducing teaching times significantly.



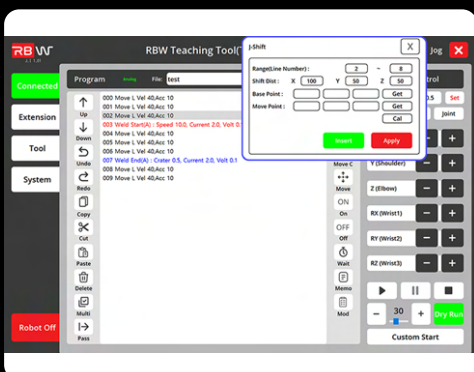
Weaving

Controlling heat input is crucial when welding thick material. The RBW software offers a wide variety of weaving patterns and parameters to address your weaving needs.



Touch Sensing

The RBW touch sensing feature utilizes the torch nozzle to detect small discrepancies in part geometry, and is a default feature on the RB-MIG, regardless of the welding machine used.



Offset (Copy & Paste) Function

The RBW Offset / Copy & Paste feature significantly reduces programming time for groups of identical workpieces with the shift, copy, cut and paste functions, available with all RBW systems.



Program Scheduler

The RBW Program Scheduler is designed for users to schedule different program sequences and execute them in an order of their choice, enabling building of customized cells, and low-downtime work sequences.

Customers



Get in touch



Address:

63, Samwon-ro, Deogyang-gu,
Goyang-si, Gyeonggi-do, 10550,
REP. OF KOREA
Goyang Arch Biz Center 2F
No.210



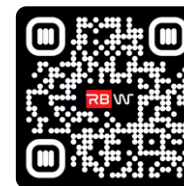
Phone Number:

+82-10-7309-0411



E-mail:

sales@rb-weld.com



Scan to learn more about us:

<https://www.rb-weld.com>

Follow us on social media:



RBW